

AMERDRAIN® Total-Drain™

PREFABRICATED BASE DRAIN

americanwick.com

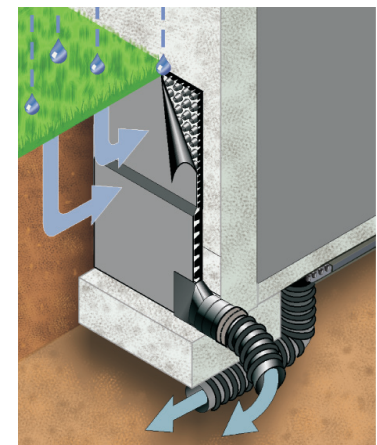


PRODUCT OVERVIEW

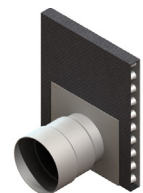
AMERDRAIN Total-Drain prefabricated drains are constructed using a patented formed polystyrene core designed specifically to transition water collected from sheet drains into a high-flow collection system. The graduated, molded core has a nonwoven filter fabric bonded to one side and prevents soil intrusion into the flow channels. Total-Drain functions as a direct replacement to costly perforated pipe and stone systems. By design, Total-Drain is equipped to handle the water volume generated by prefabricated sheet drains more efficiently. Traditional perforated pipe systems have a limited open area which can prevent the evacuation of water against structural walls. Total-Drain eliminates these problems with a specially designed core flange that allows sheet drain water to enter directly into the perimeter drain. The result is a highly cost effective system design that ensures your building is dry and secure.

TECHNICAL DATA			TOTAL-DRAIN
Physical Properties	ASTM Test Method	Unit of Measure	Typical Value
FABRIC			
Material			PP
Water Flow Rate	D-4491	gpm/ft ²	150
		Lpm/m ²	6,113
Grab Tensile Strength	D-4632	lbs	115
		N	512
Puncture Resistance	D-4833	lbs	70
		N	311
Apparent Opening Size	D-4751	sieve	70
		mm	0.21
Permittivity	D-4491	sec ⁻¹	2.2
Grab Elongation	D-4632	%	70
UV Resistance	D-4355	% / 500 Hrs	70
CORE			
Material			HIPS
Thickness	D-1777	in	.44 / 1.0
		mm	11 / 25.4
Compressive Strength	D-1621	psf	9,000
		kPa	431
Flow Rate ²	D-4716	gpm/ft	21
		Lpm/m	261
Recycled Content			78%
1- PP = Polypropylene; HIPS = High Impact Polystyrene 2- In-plane flow rate measured at 3,600 psf (172 kPa) compressive load and a hydraulic gradient of 0.1.			

AMERDRAIN®



PACKAGING
» 2' x 50' Rolls



FITTINGS:

AWD has fittings that transition collected water from Total-Drain to standard 4" pipes. Please contact us for more information.



1209 Airport Road, Monroe, NC 28110
 TF 800.242.WICK • PH 704.238.9200
 FX 704.238.0220 • info@americanwick.com



All information, drawings and specifications are based on the latest product information available at the time of printing. Constant improvement and engineering progress make it necessary that we reserve the right to make changes without notice. All physical properties are typical values unless otherwise stated. Standard variations in mechanical properties of 10% and in hydraulic properties of 20% are normal.